

Team
Orange



2nd Daily Report August 14th

TEAM MEMBERS

| | |
|-------------------|-----------------|
| Gopiraaman LVS | Tra-mi NGUYEN |
| Claire BORDEROLLE | Chenfei YAN |
| Jieun PARK | Kwang Nam KIM |
| Yoshiya TOUGE | Hiroyuki YAMABE |

ADVISOR:

Prof. LIONG Shie-Yu

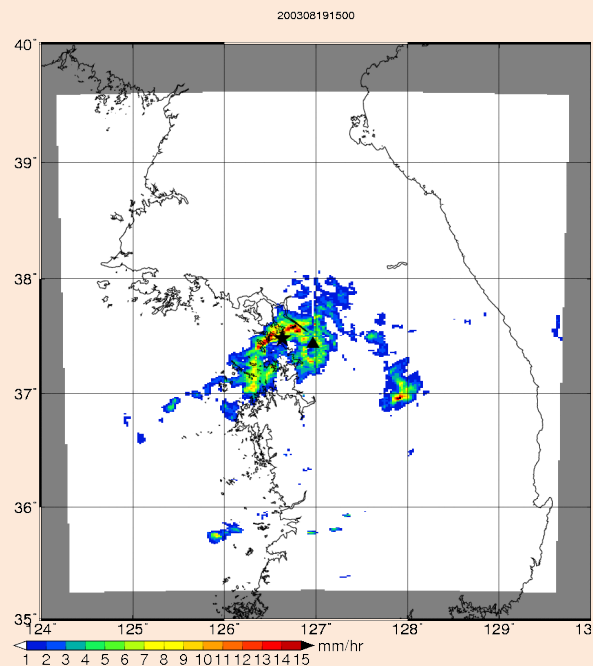


INTRODUCTION

This morning started with the lectures given by two professors one on Determining the rational dimension of Thoa River to ensure the drainage during the crop period by Prof. Ngyuen The Hung followed by a lecture given Dr. Jeanne Huang on Urban hydrology and low impact development. She introduced the hydrological processes in general and how they can be applied for the models. We gained the basic knowledge about the hydrological processes and they can be implemented in the models like EPA-SWMM and MIKE SHE.

HYDROLOGY

Translation model has been made. The event with most precipitation data was selected by the translational model. We studied how to make hyetograph and probability precipitation is estimated.



GIS

We know how to create the slope, and much clear about the use of gis work . We may try to do some hydrology analyst, just like create the sub-catchment.

MOUSE

The input for MOUSE model has been discussed. For running a MOUSE model nodes, links, rainfall etc are needed which will be obtained from the information given on the HydroAsia website. If the model is unstable ie., if it is flooding in the pipes then the suggestions will be made by taking budget and feasibility into consideration.

CONCLUSION

Thus the Day 3 of the 4th edition of HydroAsia was fruitful with considerable progress has been done towards the objectives. The day was concluded with a meeting held among team members with the advisor Prof. Liang discussing about tomorrow's plans.

DAILY CARTOONS ;) (WITHOUT OUR REAL CARTOON Tra Mi)



